

SAGE PEOPLE, PART OF SAGE BUSINESS CLOUD

FOR MODERN HR AND PEOPLE COMPANIES



88% of organisations say that finding and recruiting the right people is their biggest challenge in terms of company growth.*

HR processes are changing. And, with the global skills crisis, HR Directors are struggling to attract and retain the best talent. Their departments are in flux, and 77% of organisations report a perceived lack of strategic value from HR.* If you're going to win the war for talent, your organisation will need to make a radical change.

It must transform its HR and become a People Company, utilising people data and analytics to make decisions based on real evidence. This will improve the way you interact with current and future employees, providing great workforce experiences. The result will be a more committed and engaged workforce, and increased interest in joining your organisation. From a business perspective too, you'll benefit through higher levels of productivity, efficiency and improved performance and engagement.

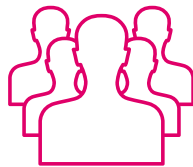
Key benefits



Instant workforce visibility

Leverage accurate people data to deliver actionable insights for smarter business decisions:

- Single source of truth for all your people data
- Rapid evidence-based answers to your questions with People Science
- Monitor key metrics for your entire workforce
- On-demand access to real-time insights
- Easy integration with other systems
- Access from any device at any time



Great workforce experiences

Deliver great experiences to improve engagement, retention and productivity:

- Continually design new and better ways of working
- Mobile, on-demand self-service access
- Integrated communications and feedback
- Tailored and branded company portal



Productivity and compliance

Improve productivity by automating key tasks and workflows:

- End-to-end process automation
- Easy integration with third-party systems
- Rapid user adoption
- Set up using configuration; not code
- Automate global processes
- Deliver compliance with local laws, such as GDPR

SAGE PEOPLE, PART OF SAGE BUSINESS CLOUD

FOR MODERN HR AND PEOPLE COMPANIES

What our customers are saying

"The Sage People team is fantastic and I simply could not do my job without them! Our account manager is great at simplifying things and getting Sage People to work for us. My job is very demanding and unfortunately I haven't got enough hours, so I could not do without Sage People case support on a daily basis and Kate to help me implement very clever reporting, processes, notices and keep the look and feel of our site in check. Thank you so much guys!"

Josie Totti Da Costa, *Arma Partners*

"We picked Sage People because it was a good fit for our organisation, which is global, fast-paced and changeable. We had confidence that the system was flexible, we wanted to configure it rather than customise it. It was a cloud product which also fits into our IT strategy and it links up with other HR systems."

Head of Talent Acquisition and HR Systems, Paddy Power Betfair



Welcome to the new world of people management. The changing nature of work and technology mean that organisations must work harder than ever to engage their people, and enable them to do their best work.

Sage People will transform your organisation into a People company. Not only will this help boost the strategic value of your HR department, it will go a long way towards unlocking future business growth for you.

An end-to-end system

Sage People platform covers the complete employee journey, right from the moment potential candidates engage with you. You and your workforce can experience immediate real-time visibility of information, and work with updates and changes that take place seamlessly and quickly. In addition, our solution is delivered via the Salesforce platform. You know it's secure, compliant, and easy to introduce into new parts of the world.

Single version of the truth

Sage People gives you a secure single system of record for all your employee-related data across multiple HR processes. With the full picture in one place, you have complete visibility of your workforce and easier reporting and analytics. Your people decisions are more informed, more accurate and more robust as well.

Automation

The automation capabilities built into Sage People reduces core HR transactional processes and tasks. Your department will spend less time re-keying things like performance review data. They'll have more time, accuracy and visibility, and that means they'll be able to deliver what employees really need. Employees too will benefit from better insights into their status, benefits and salary.

User-inspired design

The multiple generations that work together in today's workplace want flexibility. And they want to use the devices they're most comfortable with. Sage People takes these factors into account; it's designed to give people the best possible experiences—responsively and accessibly—whether they're working remotely, in the office or at a customer site. Your HR department and employees can access and manage all the information they need, wherever they are.



SAGE PEOPLE, PART OF SAGE BUSINESS CLOUD

FOR MODERN HR AND PEOPLE COMPANIES

Easy integration

Sage People allows fast, easy, and powerful integration. Data can seamlessly move between Sage People and other third-party applications such as payroll. This cuts down on re-keying data, and reduces the risk of data duplication. As a result, it significantly increases accuracy and efficiency, and gives you a single source of truth for all your people data.

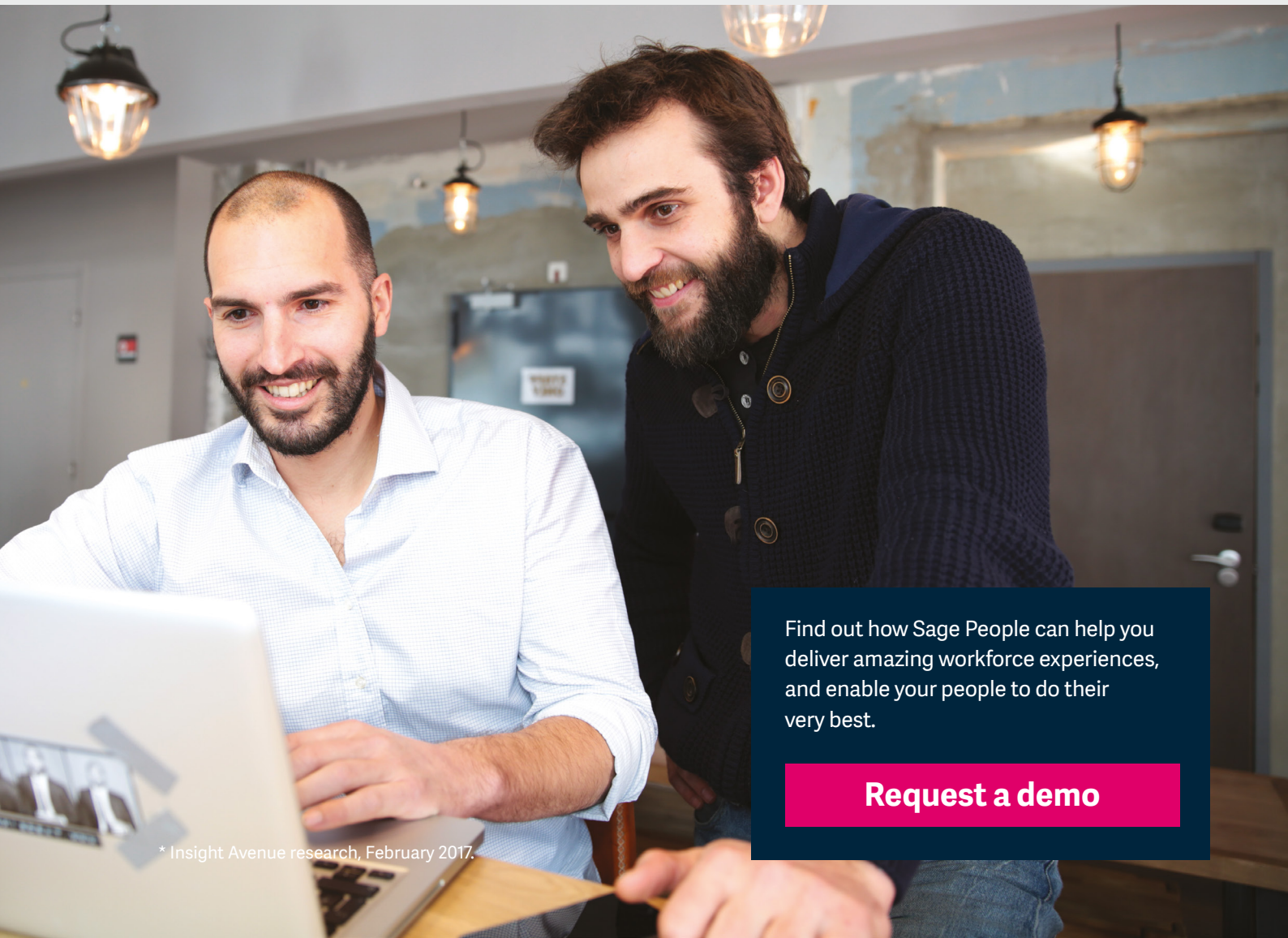
Rapid implementation

Sage People can be set up within weeks rather than months. Built on the Salesforce App Cloud, Sage People relies on simple user configuration that requires minimal or no training. For even faster implementation, we can provide “out of the box” configurations. This helps customers achieve their objectives without going through lengthy discovery and implementation processes.

Compliance and security

Automate global processes and policies, while enabling regional teams to remain compliant with local regulations. With over 150,000 users in more than 140 different countries Sage People is available in 14 languages out of the box.

Sage People is compliant with ISO27001 and other legislations, and is specifically designed to protect the security and privacy rights of your people, helping you achieve compliance with regulations such as GDPR.



Find out how Sage People can help you deliver amazing workforce experiences, and enable your people to do their very best.

[Request a demo](#)

* Insight Avenue research, February 2017.